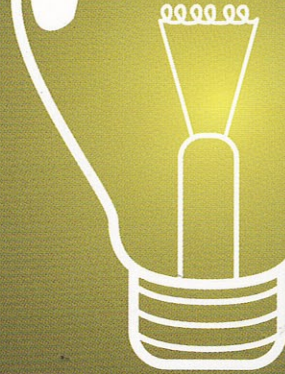


Georgia

CONSTRUCTION TODAY



Leading with Emotional Intelligence

PERMIT #43
FARGO NO
PAID
U S POSTAGE

P-3 P9 *****AUTO**5-DIGIT 31210
SCOTT THOMPSON
PIEDMONT CONSTRUCTION GROUP LLC
107 GATEWAY DR STE B
MACON GA 31210-1159



Winner
AGC of America's
Chapter of the
Year

Maximizing Opportunities for Personal and Industry Leadership

- 2009 Legislative Outlook
- Best Practices in Construction Safety
- YLP: Platform to Develop Leadership Skills
- Developing Tomorrow's Skilled Workforce
- 2008 Convention Highlights
- Build Georgia Award Winners
- Plus...What's Happening in 2009



general contractor award winners

Piedmont Construction revives historic Ice House

General Contractor: Piedmont Construction Group

Project: The Ice House

Project Category: Firms with Gross Construction Revenue Between \$50-100 Million; Construction Management at Risk; Building; Renovation

Architect: Larry Pope, SP Design Group

** This project also won a Merit Award in the "Best Sustainable Building Practices" category.*

During the period of post-Civil War reconstruction, Macon served as a transportation hub for the entire state of Georgia. The Ice House was built in 1890 for the Atlantic Cold Storage Company, which was able to serve customers who arrived in carriages or buggies.

Piedmont Construction Group's 2007 renovation of the Ice House truly added strength to the revitalization of downtown Macon. Piedmont worked to provide constructability analysis while accounting for the fact that preservation of the historic structure came first and foremost. Piedmont was able to implement a design that maintained the historic features of the exterior and offered high-end features on the interior.

The adjacent River Walk and Central City Park add the elements of nature and a community feel to the Ice House and many other nearby renovated buildings. The area has become rich with cultural attractions and venues.

Removal of the existing tower structures of the Ice House proved tricky and presented several difficult

obstacles. The highlight was official notification from Norfolk Southern Railway that their entire communication infrastructure for the state of Georgia was routed below one of the towers and could not be rerouted or taken offline. Overcoming this and other hurdles was accomplished through creative schedule management.

